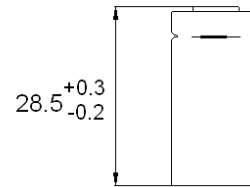
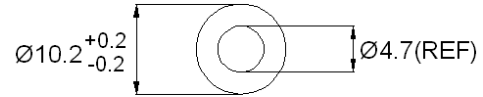


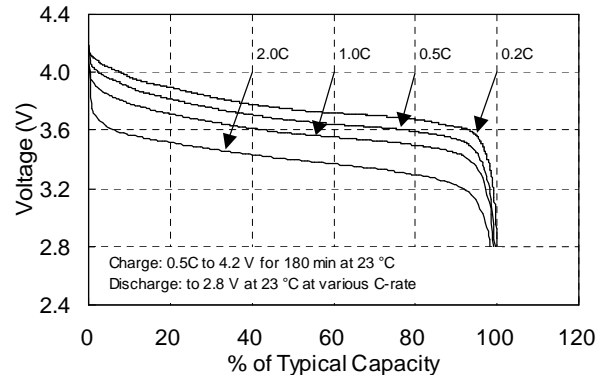
Model No.: GP1029L20

Type	: Rechargeable Lithium Ion Cylindrical Cell
Nominal Dimension (with Sleeve)	: $\Phi = 10.2 \text{ mm}^*$ H = 28.5 mm
Applications	: Recommended discharge current 42 to 420 mA
Nominal Voltage	: 3.7V
Capacity	: Typical: 210 mAh Minimum: 195 mAh When discharged at 42 mA to 2.8 V at 23 °C
Charge Condition	: 105 mA to 4.2 V for 3.0 hrs at 23 °C
Recommended Charging Condition in Applications	: 42 mA to 168 mA (0.2 to 0.8C) Charge termination control recommend control parameters: Taper current 0.05C at 4.2 V
Clamped Charging Voltage	: 4.2 V +/- 0.05 V
Service Life	: >500 cycles (70% of typical capacity)
Weight	: Approx. 6.0 g
Internal Resistance	: 150 m Ω max. at 1000Hz
Ambient Temperature Range	: Charging : 0 to 45 °C Discharging : -20 to 60 °C ** Storage (1 month) : -20 to 45 °C Storage (6 months) : -20 to 40 °C Storage (1 year) : -20 to 35 °C
Note	: * with plastic sleeve
Precaution	: ** 60 °C is only applied during 1C or lower discharging current

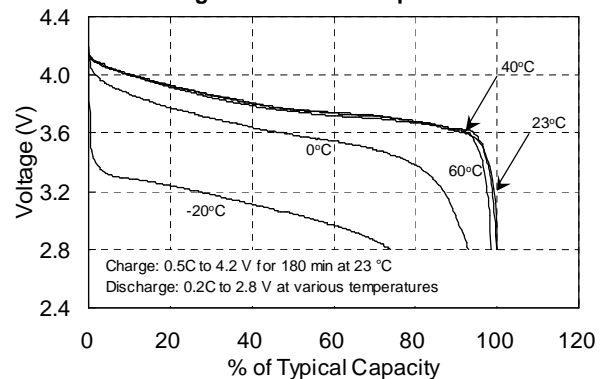


UNIT:mm

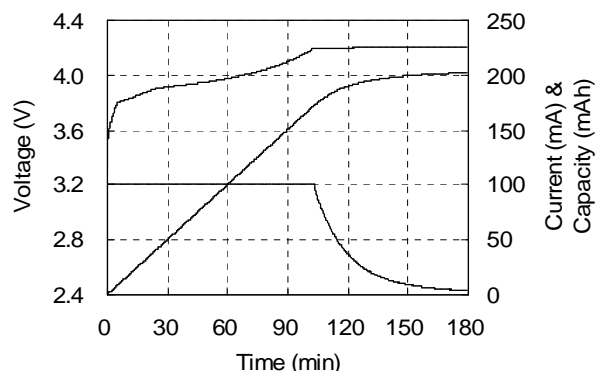
Discharge at Different C-rate



Discharge at Different Temperatures



Charging Characteristics



The information (subject to change without prior notice) contained in this document is for reference only and should not be used as a basis for product guarantee or warranty. For applications other than those described here, please consult your nearest GP Sales and Marketing Office or Distributors.